



**CIRCLE REDMONT®**  
Prefabricated Glass Panel Systems



## ABOUT US

**Expertise and Experience Beyond Compare.** We are the World's leading innovative manufacturer of fine, custom, engineered, prefabricated glass panel systems. Our company's history spans over a century rooted in glass manufacturing and, over the last 35 years, we have focused solely on structural glass panel systems. We are committed to engineering elegant, structural glass products that perform – all of our products are engineered to "last a lifetime". We have tens of thousands of Worldwide applications and our products are often included in the World's most celebrated projects from famous museums and theme parks to acclaimed corporate centers and celebrity residences. We take great pride in the intellectual capital we have amassed over the last century to deal with the inherent complexities one must overcome when incorporating glass into structural elements. Our unparalleled experience and expertise enable us to successfully execute our customer's design dreams and they allow us to help our customers make smart choices!

**Product Lines.** As the leading single source manufacturer of structural glass panel systems, Circle Redmont® offers seven unique and innovative product lines that can be designed into virtually any type of application to meet almost all structural and aesthetic design criteria. Each of our core product lines offers a distinctive look, but all are customizable and share similar characteristics: We take glass (blocks, solid pavers, bullets, composite "Planks" or insulated glass) and factory glaze it in structural frames (of aluminum, precast concrete, cast iron, steel, stainless steel, etc.). During the manufacturing process, our craftsmen work with finest grade materials, proprietary methods and proprietary compounds to ensure we deliver a structural glass panel system second to none and guaranteed to perform!

**Designed To Last.** Our teams of experienced designers, engineers and sales associates draw upon Circle Redmont's® experience and expertise to work with our customers to ensure they make smart choices. Circle Redmont's® designers and engineers are committed to creating products that will work for a structure's lifetime. We select the finest grade materials and proprietary compounds for all of our products. Plus, we are committed to serviceability. This means building owners get products that have been built with maintenance in mind. Should the glass ever become damaged due to vandalism or other abuse, it may be removed and replaced in a matter of minutes without affecting the structural integrity of the panel or surrounding glass. This is a huge benefit and essential when furnishing a product designed to last a building's lifetime!

## OUR PRODUCTS

71R™ Panels 3,4



81R™ Panels 5



91R™ Panels 6,7



SolarWhite™ Panels 8,9



Elite™ Panels 10,11



Outlooks® & PSG2000™  
Skylights 12



Circle Redmont, Inc.® • 2760 Business Center Boulevard • Melbourne, FL 32940

2 Phone: (321) 259-7374 • (800) 358-3888 • Fax: (321) 259-7237 [www.circleredmont.com](http://www.circleredmont.com) • © 2002 All Rights Reserved

# 71R Panels

## 71R™ Glass Paver & Precast Concrete Panel System

**Features.** 71R™ panels offer an exciting way to recycle light in heavy traffic areas. Extremely durable, Circle Redmont's® 71R™ panels are appropriate for all types of structures, from distinctive residences to mass transit areas that demand incredible strength and durability. Circle Redmont's® 71R™ panels are load bearing and fire resistant. Circle Redmont's® time proven processes and proprietary sealants ensure perfect weather-tight results. While maintaining a 150lb. live load over a five foot (5') span 71R™ panels weigh approximately 45 lbs. per sq.ft. 71R™ prefabricated panels install quickly and easily, are low maintenance, very cost effective and warranted.

**Applications.** 71R™ Glass Paver & Precast Concrete Panels may be installed as skylights, decklights, stairs, skybridges, sidewalks, walls and other creative applications. 71R™ Glass Paver & Precast Concrete Panels are extremely versatile and appropriate for use in all market sectors (e.g. commercial office, retail spaces, cultural centers, museums, educational institutions, government buildings, mass transit, hospitals and healthcare facilities, hotels and resorts, theme parks, and distinctive residences) interior and exterior.

**Options.** 71R™ panels incorporate your choice of 4-1/2", 6" or 8" square, or 4-1/2" round solid glass pavers. 71R™ panels' top surface is available in a variety of finishes (e.g. broom, smooth trowel, sandblast). Custom concrete colors and faux finishes are also available. 71R™ panel's top surface can be factory modified to accept field applied finishes (e.g. wood, tile, terrazzo). In addition to custom sizes and shapes, 71R™ panels can be customized to meet severe loading requirements (e.g. ASHTO HS 20-44 severe bridge). Circle Redmont® can customize our 71R™ panels for your particular project.

**Common Panel Sizes.** Circle Redmont® offers 13 common panel sizes. Please refer to the chart on page 4 for more information. If you require custom sizes or shapes, please call us at (800) 358-3888 or visit our website at [www.circleredmont.com](http://www.circleredmont.com) for more information.

**Maintenance Benefits.** Whatever size or shape paver you choose, should the glass become damaged due to vandalism or other extreme abuse, the paver can be removed and replaced in a matter of minutes. Replacement glass pavers, sealant and instructions are available! This is a huge benefit and crucial for any product designed to last for a building's lifetime!



- ✓ Design & Engineering Assistance Included In Cost
- ✓ Full, Grid & Custom Design Sandblast Pattern On Glass Pavers
- ✓ Panels Designed With Maintenance In Mind
- ✓ Residential, Commercial and High Load Construction
- ✓ Variety Of Surface Finishes Available



Photos Left and Top to Bottom  
 Metrowest Clubhouse, Orlando, FL, Architect: The Evans Group  
 Residence, New York, NY, Architect: Robert Lipson  
 River Center, San Antonio, TX, Architect: Urban Design Group,  
 Tulsa, OK - Diesel Clothing Store, New York, NY,  
 Architect: Ciuffarrin Architects - High Museum, Atlanta, GA,  
 Architect: Parker Scogin

# 71R Panels

## Common Panel Sizes

### 6" BLOCK STANDARD PANEL SIZES

| BLOCKS      | 9         | 15        | 25        | 40        |
|-------------|-----------|-----------|-----------|-----------|
| PANEL PLAN  |           |           |           |           |
| PANEL SIZES | 30" X 30" | 30" X 45" | 45" X 45" | 45" X 60" |

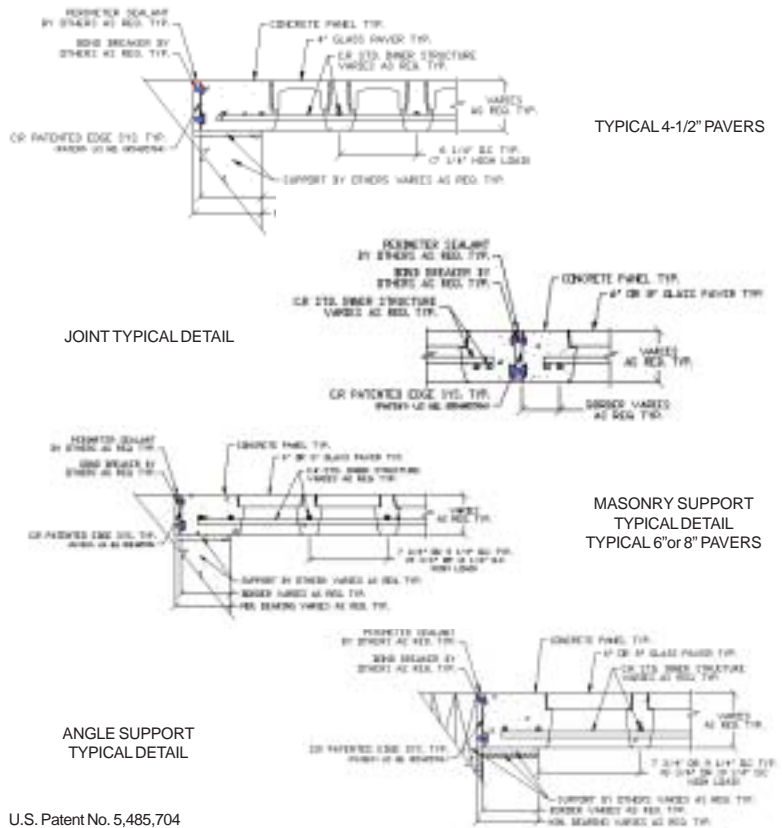
### 8" BLOCK STANDARD PANEL SIZES

| BLOCKS      | 9         | 21        | 16        | 26        | 25        |
|-------------|-----------|-----------|-----------|-----------|-----------|
| PANEL PLAN  |           |           |           |           |           |
| PANEL SIZES | 30" X 30" | 30" X 72" | 45" X 45" | 45" X 72" | 54" X 54" |

### 4-1/2" BLOCK STANDARD PANEL SIZES

| BLOCKS      | 25        | 35        | 60        | 60        |
|-------------|-----------|-----------|-----------|-----------|
| PANEL PLAN  |           |           |           |           |
| PANEL SIZES | 30" X 38" | 30" X 51" | 30" X 70" | 44" X 70" |

## Construction Details



U.S. Patent No. 5,485,704

## 71R™ Glass Paver & PreCast Concrete Panel System Technical Specifications

Where shown on plans furnish and install Circle Redmont® 71R™ Panels of glass paver and precast concrete consisting of a two way reinforced concrete precast grid factory glazed with replaceable type solid glass pavers spaced with manufacturers typical on center dimension with proper margins in each monolithic panel.

**Manufacturer shall be  
Circle Redmont, Inc., 2760 Business Center Blvd., Melbourne, Florida 32940 Phone 321-259-7374, 800-358-3888.**

71R™ Panels shall be factory fabricated and glazed of overall sizes as detailed on the drawings. Concrete materials, reinforcing steel and framework shall be Circle Redmont's® standard. Concrete mix design, size and placement of reinforcing shall produce a concrete grid which will meet or exceed the specified structural requirements.

Manufacturer shall have a minimum of 10 years continuous experience in producing and supplying panels as detailed on the drawings. Manufacturer must be able to document its warranty based upon at least 50 projects with at least five years of successful field performance of the product type specified. Contracted manufacturer shall bear sole responsibility for all facets of panel fabrication and required personnel for manufacturing units. Panels shall have a thickness at outside edges in accordance with manufacturers standard details and shall be constructed to support a load of at least 150 pounds per square foot on a five foot clear span.

Solid glass block units shall be standard, traffic bearing, annealed glass. Factory sandblasting of the top of the block is recommended for walking surfaces. Glass units shall be initially factory installed in respective cell openings using Circle Redmont's® standard bedding material and waterproof sealant.

Construction shall be furnished in precast panels and installed at site by others. All expansion joints between and around each monolithic panel shall be caulked and waterproofed with a special refined compound used for this purpose. Manufacturer shall furnish a one-year warranty covering defective materials, workmanship and weathertight performance of the glazed panel units. Contractor shall furnish a concurrent one year written warranty covering defective materials, workmanship and weathertight performance of the field applied joint seals around the perimeter of the panels and between adjoining panels.

**The World's Finest Products That Utilize Glass To Harness Light!**



# 81R Panels

## 81R™ Glass Bullet & Cast Iron Panel System

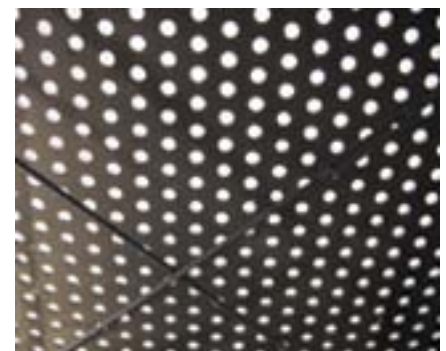
**Features.** 81R™ Glass Bullet & Cast Iron Panels allow you to replace existing vault light sidewalk areas to preserve the historic value of an area with 1800's period charm. Hundreds of tiny 1-1/2" solid glass bullets are incorporated into every 81R™ Panel. Each 81R™ panel is custom molded, cast and prefabricated to your specific site conditions while meeting today's rigid building codes and live load requirements. Recognized by The New York Historic Preservation "Landmarks" Committee as a suitable replacement for existing cast iron & glass areas, 81R™ Panels will help you beautify your streetscape restoration or historic renovation to its original splendor.

**Applications.** Circle Redmont's® 81R™ Glass Bullet & Cast Iron Panels may be installed as skylights, decklights, stairtreads, skybridges, sidewalks, walls and other creative applications. 81R™ Glass Bullet & Cast Iron Panels are appropriate for use in all market sectors (e.g. commercial office, retail spaces, cultural centers, museums, educational institutions, government buildings, mass transit, hospitals and healthcare facilities, hotels and resorts, theme parks and distinctive residences) interior and exterior.

**Options.** 81R™ Panels' glass bullets are available in a variety of colors. Choose from several surface finishes including a standard blackened patina, custom color paint, or 81R™ panels can be left to weather naturally. 81R™ Panels come in two panel thicknesses: Sidewalk loading (four inches thick) weigh approximately 95lbs per sq.ft. and regular commercial loading (approximately one and a half inches thick) weigh approximately 38lbs. per sq.ft. Circle Redmont® offers a complete line of cast iron Thresholds, Corners and Joint Assemblies.

**Common Panel Sizes.** Each individual 81R™ Panel generally does not exceed fifteen (15) sq. ft. 81R™ panels may be installed in tandem to cover virtually any size overall opening with intermediate support provided by others or Circle Redmont® can engineer a structural support sub-frame.

**Maintenance Benefits.** Long recognized as an extremely durable material, cast iron is virtually maintenance free. Should a glass bullet become damaged due to vandalism or other extreme abuse, the glass can be removed and replaced in a matter of minutes. Replacement glass, sealant and instructions are available! This is a huge benefit and crucial for any product designed to last for a building's lifetime!



Photos Top to Bottom  
Henry Cottons, San Francisco, CA, Architect: FRCH Designs  
Worldwide

### 81R™ Glass Bullet & Cast Iron Panel System Technical Specifications

Where shown on plans furnish and install Circle Redmont® 81R™ solid glass bullet and cast iron panels consisting of a cast iron grid factory glazed with replaceable type solid glass bullets spaced with manufacturers typical on center dimension with proper margins in each monolithic panel.

**Manufacturer shall be Circle Redmont, Inc., 2760 Business Center Blvd., Melbourne, Florida 32940 Phone 321-259-7374, 800-358-3888.**

81R™ Panels shall be factory cast and glazed of overall sizes as detailed on the drawings. Cast iron materials and form work shall be Circle Redmont's® standard. All cast iron panels will be produced to meet or exceed the specified structural requirements.

Panels shall be capable of withstanding expansion and contraction caused by a temperature range from -10F to 120F without stress on the glass bullet or edge seal failure. The completed panel shall be capable of supporting the live load as required by the local building code.

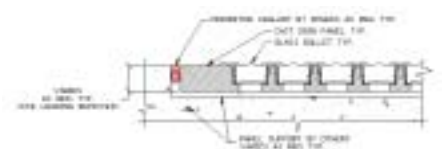
Solid glass bullet units shall be standard, traffic bearing, annealed glass. Factory sandblasting of the top of the block is recommended for walking surfaces. Glass units shall be initially factory installed in respective cell openings using Circle Redmont's® standard waterproof sealant.

Panel construction shall be furnished by Circle Redmont® and installed at site by others. Contractor shall set panels into prepared openings as detailed on manufacturers shop drawings. Panels shall be set to proper pitch and crossfalls to ensure proper drainage of surface water and avoid ponding.

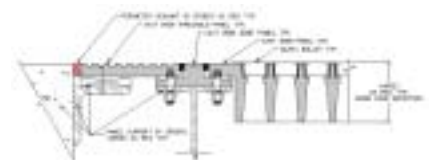
All joints between and around each monolithic panel shall be caulked and waterproofed with a special refined compound used for this purpose.

Manufacturer shall furnish a one year warranty covering defective materials, workmanship and weathertight performance of the glazed panel units. Contractor shall furnish a concurrent one year written warranty covering defective materials, workmanship and weathertight performance of the field applied joint seals around the perimeter of the panels and between adjoining panels.

### Construction Details



81R™ FLOORING & FACADE  
TYPICAL THRU SECTION



81R™ SIDEWALK  
TYPICAL THRU SECTION

# 91R Panels

## 91R™ Glass Paver Or Plank Glass & Metal Panel System

**Features.** 91R™ panels are the best choice for projects seeking maximum glass coverage and the highest illumination. 91R™ panels incorporate square glass pavers or Plank Glass™ into composite metal framework panels custom tailored for each projects unique requirements. 91R™ panel construction weighs approximately 24lbs. per square foot and engineered for commercial and residential live loads. Overall panel thickness and framework design vary with span, loading and aesthetic requirements. Similar to Circle Redmont's® other products, with our 91R™ panels we single source manufacture a fully engineered and factory prefabricated composite panels. In addition, our proprietary setting materials and fabrication methods that have been time tested and perfected over the last 35 years. All of this ensures you get a durable glass panel system that performs extremely well!

**Applications.** 91R™ panels may be installed as skylights, decklights, stairs and landings, flooring, skybridges, sidewalks, windows, walls and other creative applications. 91R™ panels are appropriate for use in all market sectors (e.g. commercial office, retail spaces, cultural centers, museums, educational institutions, government buildings, mass transit, hospitals and healthcare facilities, hotels and resorts, theme parks, and distinctive residences) interior and exterior.

**Options.** Six inch (6") square glass pavers, eight inch (8") square glass pavers or custom size Plank Glass™. Square glass pavers and Plank Glass™ can be cut to accommodate radius and other geometric panel shapes. Glass pavers and Plank Glass™ is available in Low Iron ("Clear glass"). All glass is available in a variety of colors. Custom paint color finishes available to match virtually any color for metal framework. For panel frame construction, choose from standard steel or specialty metals such as stainless steel, bronze, etc.

**Common Panel Sizes.** 91R™ panels are designed and engineered to a project's requirements. Structural steel frameworks can be designed to span virtually any opening.

**Maintenance Benefits.** As with all Circle Redmont® products, whatever size or shape glass paver or Plank Glass™ you choose, should the glass ever become damaged due to vandalism or other extreme abuse, the glass can be removed and replaced in a matter of minutes. Replacement pavers, sealant and instructions are available! This is a huge benefit and crucial for any product designed to last for a building's lifetime!

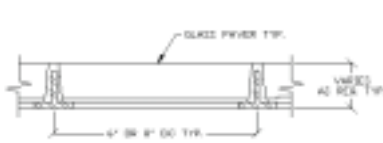
● [www.circleredmont.com](http://www.circleredmont.com) ●



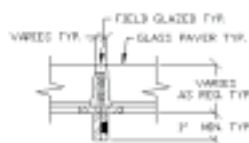
Photos Left and Top to Bottom  
Yerba Buena Gardens Moscone Center, San Francisco, CA, Architect: MGA Partners, LDA Architects - Portofino Headquarters, Miami Beach, FL, Architect: Bermello Ajamil Associates - Proctor & Gamble Headquarters, Mason, OH, Architect: CUH2A - Private Residence, Long Island, NY, Architect: Bob Madey - Gap Headquarters, San Francisco, CA, Architect: Gensler

# 91R Panels

## Construction Details



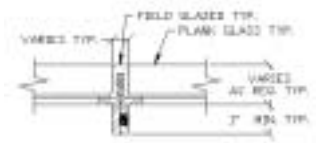
91R™ TYPICAL 6"OR 8" PAVERS



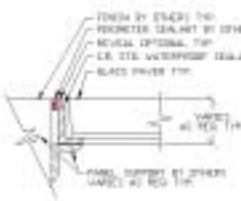
91R™ PAVER JOINT TYPICAL DETAIL



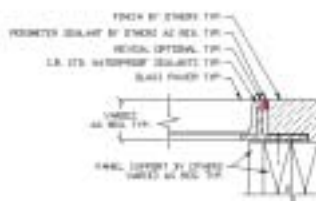
91R™ TYPICAL PLANK GLASS



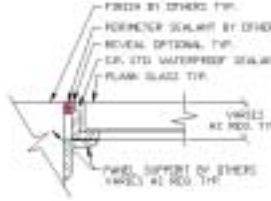
91R™ PLANK JOINT TYPICAL DETAIL



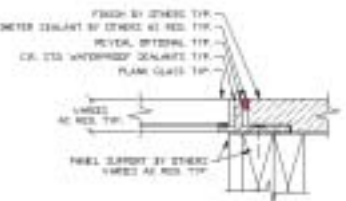
91R™ PAVER  
TYPICAL END DETAIL #1



91R™ PAVER  
TYPICAL END DETAIL #2



91R™ PLANK  
TYPICAL END DETAIL #1



91R™ PLANK  
TYPICAL END DETAIL #2

**Full, Grid & Custom Design Sandblasted Patterns • Residential, Commercial, Institutional  
Glass Pavers Are Replaceable • Installs Quickly & Easily – Just Lift & Lay Product  
Design Assistance, Engineering & Shop Drawings Included In Cost**

### 91R™ Plank Glass & Metal Panel System Technical Specifications

Where shown on plans to furnish and install Circle Redmont's® 91R™ Plank Glass and Metal Panel System consisting of standard composite structure, traffic-bearing glass set in manufacturers standard construction steel (or other appropriate metal) framing.

Manufacturer shall be Circle Redmont, Inc., 2760 Business Center Blvd., Melbourne, Florida 32940 Phone 321-259-7374, 800-358-3888.

91R™ Panels shall be factory fabricated and glazed of overall sizes as detailed on the drawings. Steel framework shall be Circle Redmont's® standard and shall be produced to meet or exceed the specified structural requirements.

Manufacturer shall have a minimum of 10 years continuous experience in producing and supplying panels as detailed on the drawings. Manufacturer must be able to document its warranty based upon at least 50 projects with at least five years of successful field performance of the product type specified. Contracted manufacturer shall bear sole responsibility for all facets of panel fabrication and required personnel for manufacturing units.

Panels shall have Circle Redmont's® standard prime paint finish consisting of standard full sandblast to white metal and epoxy primer.

Where panels have factory paint finish, finish paint shall be Circle Redmont® standard two part urethane paint (2) coats.

Glass units shall be standard composite structure, traffic-bearing glass. Factory sandblasting of the top of the glass is recommended for walking surfaces. Glass units shall be initially factory installed in respective cell openings using Circle Redmont's® standard waterproof sealant and bedding material.

The completed panel shall be capable of supporting a live load of not less than 100 pounds per square foot on a 4' clear span.

Manufacturer shall furnish a one year warranty covering defective materials, workmanship and weathertight performance of the glazed panel units.

Contractor shall furnish a concurrent one year written warranty covering defective materials, workmanship and weathertight performance of the field applied joint seals around the perimeter of the panels and between adjoining panels.

### 91R™ Glass Paver & Metal Panel System Technical Specifications

Where shown on plans furnish and install Circle Redmont's® 91R™ Glass Paver and Metal Panels consisting of two way welded steel (or other appropriate metal) grid glazed with replaceable type solid glass pavers spaced with manufacturers typical on center dimension with proper margins in each monolithic panel.

Manufacturer shall be Circle Redmont, Inc., 2760 Business Center Blvd., Melbourne, Florida 32940 Phone 321-259-7374, 800-358-3888.

91R™ Panels shall be factory fabricated and glazed of overall sizes as detailed on the drawings, steel framework shall be Circle Redmont's® standard and shall be produced to meet or exceed the specified structural requirements.

Manufacturer shall have a minimum of 10 years continuous experience in producing and supplying panels as detailed on the drawings. Manufacturer must be able to document its warranty based upon at least 50 projects with at least five years of successful field performance of the product type specified. Contracted manufacturer shall bear sole responsibility for all facets of panel fabrication and required personnel for manufacturing units.

Panels shall have Circle Redmont's® standard prime paint finish consisting of standard full sandblast to white metal and epoxy primer.

Where panels have factory paint finish, finish paint shall be Circle Redmont's® standard two part urethane paint (2) coats.

Solid glass block units shall be standard, traffic bearing, annealed glass. Factory sandblasting of the top of the block is recommended for walking surfaces. Glass units shall be initially factory installed in respective cell openings using Circle Redmont's® standard waterproof sealant and bedding material.

The completed panel shall be capable of supporting a live load of not less than 100 pounds per square foot on a 4' clear span.

Manufacturer shall furnish a one year warranty covering defective materials, workmanship and weathertight performance of the glazed panel units. Contractor shall furnish a concurrent one year written warranty covering defective materials, workmanship and weathertight performance of the field applied joint seals around the perimeter of the panels and between adjoining panels.



# SolarWhite

## SolarWhite™ Glass Block & Metal Panel System

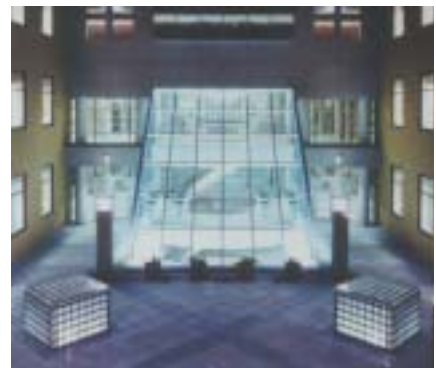
**Features.** SolarWhite™ Panels incorporate hollow glass blocks factory fabricated into structural metal grid frameworks. SolarWhite's™ panelized construction is superior in strength and ease of installation to on-site lay up of hollow glass blocks or kits with pieces and parts. SolarWhite™ panels weigh approximately 20lbs. per square foot when using 8" square hollow glass block with standard aluminum metal framework and will maintain a minimum live load capacity of 60lbs. per sq.ft on a 5'-0" span. Prefabricated, load bearing, composite, monolithic glass block SolarWhite™ panels are thermally efficient and have an excellent R-value equaling the insulating value of double pane glazing. SolarWhite™ panels install quickly and easily, are low maintenance, very cost effective and warranted.

**Applications.** SolarWhite™ glass block and metal framework panels may be installed as skylights, residential live load decklights and skybridges, walls, windows including curved and vaulted panels in single and tandem assemblies and other creative applications. SolarWhite™ Panels are versatile and appropriate for use in all market sectors (e.g. commercial office, retail spaces, cultural centers, museums, educational institutions, government buildings, mass transit, hospitals and healthcare facilities, hotels and resorts, theme parks, and distinctive residences) interior and exterior.

**Options.** Six inch (6") square, eight inch (8") square and twelve inch (12") square hollow glass blocks in three inch (3") or four inch (4") thicknesses. Glass is available in a variety of patterns and designs. Custom paint color finishes available to match virtually any color for metal framework. For panel frame construction, choose from standard aluminum or specialty metals such as steel, stainless steel, bronze, etc. Curved or vaulted panels in single or tandem assemblies. A variety of sizes are available in three perimeter types, curb, flange and inset, or Circle Redmont® can engineer and customize SolarWhite™ for your particular project.

**Common Panel Sizes.** Circle Redmont® offers common panel sizes. Please refer to the Rough Opening Charts on page 9. If you require custom sizes, shapes or configurations, please call us at (800) 358-3888 for more information.

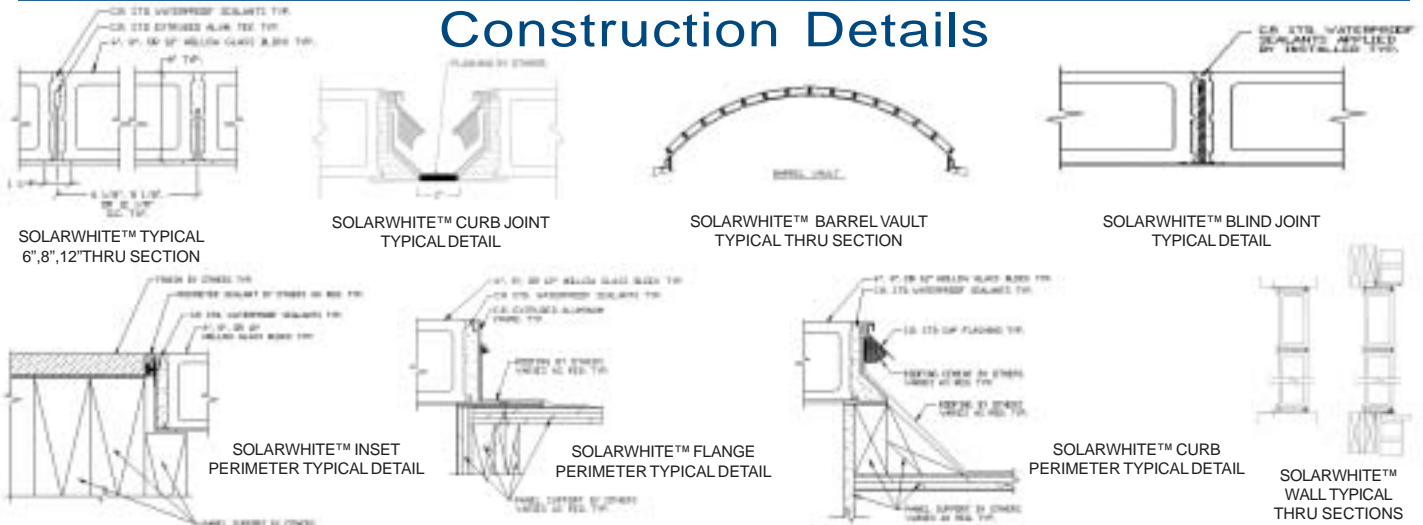
**Maintenance Benefits.** As with all Circle Redmont® products, whatever size or shape glass block you choose, should the glass become damaged due to vandalism or other extreme abuse, the glass can be removed and replaced in a matter of minutes. Replacement glass, sealant and instructions are available! This is a huge benefit and crucial for any product designed to last for a building's lifetime!



- Design & Engineering Assistance Included In Cost
- Full, Grid & Custom Design Sandblast Pattern On Glass Blocks
- Panels Designed With Maintenance In Mind
- Residential and Commercial Construction
- Variety Of Surface Finishes Available

# SolarWhite

## Construction Details



**SLW CURB TYPE PANEL (Overall Dimension Chart)**

| # of BLOCK | 6" Block<br>6-1/8" O.C. | 8" Block<br>8-1/8" O.C. | 12" Block<br>12-1/8" O.C. |
|------------|-------------------------|-------------------------|---------------------------|
| 1          | 9-1/8"                  | 11-1/8"                 | 15-1/8"                   |
| 2          | 18-1/4"                 | 18-1/4"                 | 27-1/4"                   |
| 3          | 21-3/8"                 | 27-3/8"                 | 38-3/8"                   |
| 4          | 27-1/2"                 | 35-1/2"                 | 51-1/2"                   |
| 5          | 33-5/8"                 | 43-5/8"                 | 63-5/8"                   |
| 6          | 38-3/4"                 | 51-3/4"                 | 75-3/4"                   |
| 7          | 45-7/8"                 | 59-7/8"                 | 87-7/8"                   |
| 8          | 52"                     | 66"                     |                           |
| 9          | 58-1/8"                 | 75-1/8"                 |                           |
| 10         | 64-3/4"                 | 84-1/4"                 |                           |
| 11         | 72-3/8"                 | 92-3/8"                 |                           |
| 12         | 78-1/2"                 |                         |                           |
| 13         | 82-5/8"                 |                         |                           |
| 14         | 88-3/4"                 |                         |                           |
| 15         | 94-7/8"                 |                         |                           |

Curb Type Panel. Install on conventional curb. Panel is furnished complete with cap flashing & corner caps. For maximum rough opening subtract 2" overall.

**SLW FLANGE/NO FLANGE TYPE PANEL (Overall Dimension Chart)**

| # of BLOCK | 6" Block<br>6-1/8" O.C. | 8" Block<br>8-1/8" O.C. | 12" Block<br>12-1/8" O.C. |
|------------|-------------------------|-------------------------|---------------------------|
| 1          | 7"                      | 9"                      | 13"                       |
| 2          | 13-1/8"                 | 17-1/8"                 | 25-1/8"                   |
| 3          | 19-1/4"                 | 25-1/4"                 | 37-1/4"                   |
| 4          | 25-3/8"                 | 33-3/8"                 | 49-3/8"                   |
| 5          | 31-1/2"                 | 41-1/2"                 | 61-1/2"                   |
| 6          | 37-5/8"                 | 49-5/8"                 | 73-5/8"                   |
| 7          | 43-3/4"                 | 57-3/4"                 | 85-3/4"                   |
| 8          | 49-7/8"                 | 65-7/8"                 |                           |
| 9          | 56"                     | 72"                     |                           |
| 10         | 62-1/8"                 | 82-1/8"                 |                           |
| 11         | 68-1/4"                 | 90-1/4"                 |                           |
| 12         | 74-3/8"                 |                         |                           |
| 13         | 80-1/2"                 |                         |                           |
| 14         | 86-5/8"                 |                         |                           |
| 15         | 92-3/4"                 |                         |                           |

Flange Type Panel. This low profile SolarWhite panel rests directly on the roofing without a curb. Maximum rough opening for flange type panel subtract 1" overall.

No Type Panel. Sets into structure with top flush with surrounding surface. Maximum rough opening add 1" overall.

### SolarWhite™ Glass Block & Metal Panel System Technical Specification

Where shown on plans furnish and install Circle Redmont® SolarWhite™ Panel System consisting of a structural two way extruded aluminum (or other appropriate metal) grid frame, factory glazed with hermetically sealed, replaceable type, glass block units spaced with manufacturers typical on center dimension with proper margins in each monolithic panel.

**Manufacturer shall be Circle Redmont, Inc., 2760 Business Center Blvd., Melbourne, Florida 32940 Phone 321-259-7374, 800-358-3888.**

SolarWhite™ Panels shall be factory fabricated and glazed of overall sizes as detailed on the drawings. Glass units shall be initially factory installed and insulated in respective cell openings of structural aluminum grids using Circle Redmont's® standard composite thermofil insulating material. Panels shall be weather sealed on their top surfaces with manufacturers standard sealant. Factory sandblasting of the top surface of glass block is recommended for all walking surfaces.

Manufacturer shall have a minimum of 10 years continuous experience in producing and supplying panels as detailed on the drawings. Contracted manufacturer shall bear sole responsibility for all facets of panel fabrication and required personnel for manufacturing units.

The framing system shall provide for expansion and contraction of component materials caused by surface temperature range of -20 degree F to 180 degree F without causing buckling stress on structural elements, reduction of performance or other adverse effects.

SolarWhite™ Panels shall be designed and constructed in accordance with manufacturers standard details to support a live load of a least sixty (60) pounds per square foot.

Water penetration is the appearance or damage from water, other than condensation, on the underside of the panels. The panels shall be waterproof and weathertight and shall be warranted to be free from defects in materials and workmanship for a period of five years from the date of shipment. Warranty shall be documented by at least 50 projects with at least five years of successful field performance.

Construction shall be furnished in factory, prefabricated panels installed by others. Installer shall furnish a concurrent written warranty covering defective materials, workmanship and weathertight performance of in field applied joint seals around the perimeter and between adjoining panels.

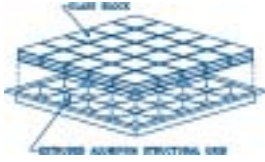
Visit our Website at  
[www.circleredmont.com](http://www.circleredmont.com)



# Elite Panels

## Elite™ Glass Block & Internal Metal Panel System

**Features.** Elite™ panels bring you the look of hand-laid glass block with the structural, maintenance and other benefits only our prefabricated panels can offer!



Elite™ Panels incorporate hollow glass blocks panelized in a structural metal grid framework that creates an individual frame around every glass block. This framework provides incredible strength, durability and security allowing for easy replacement of a glass block should one ever become damaged, without jeopardizing the integrity of the window or wall.

Prefabricated in a controlled environment, unlike hand-laid installations, Elite™ Panels can be installed year-round! You enjoy lasting beauty and long-term weatherproof performance with zero air infiltration. Elite™ panels are energy efficient, equaling the insulating value of double pane glazing, reducing heat and air conditioning costs. Elite Panels™ are perfect for many applications where you wish to bring daylight into an area while maintaining privacy.

**Applications.** Elite™ panels may be installed in virtually all vertical applications including straight (and custom radius cylinder-type) walls, windows, and accents. Elite™ panels are appropriate for use in all market sectors (e.g. commercial office, retail spaces, educational institutions, cultural centers, museums, governments buildings, mass transit, hospitals and healthcare facilities, hotels and resorts, theme parks and distinctive residences) interior and exterior.

**Options.** Elite™ panels come with our standard white proprietary grout sealant or custom grout colors and our custom proprietary silicone sealants are available. Choose from six inch (6"), eight inch (8") or twelve inch (12") square hollow glass blocks in three or four inch (3" or 4") thicknesses. Also, choose from standard clear wavy glass or custom patterns and designs. Custom panels sizes and radius (cylinder-type configurations) are available. We can custom design and engineer our panels to withstand severe wind-load requirements and other structural criteria.

**Common Panel Sizes.** Circle Redmont® offers common panel sizes. Please refer to the Rough Opening Chart on page 11. If you require custom sizes, shapes or configurations, please call us at (800) 358-3888 for more information.

**Maintenance Benefits.** Whatever size or shape glass block you choose, should the glass ever become damaged due to vandalism or other extreme abuse, the glass can be removed and replaced in a matter of minutes. Replacement glass block, sealant and instructions are available! This is a huge benefit and crucial for any product designed to last for a building's lifetime!



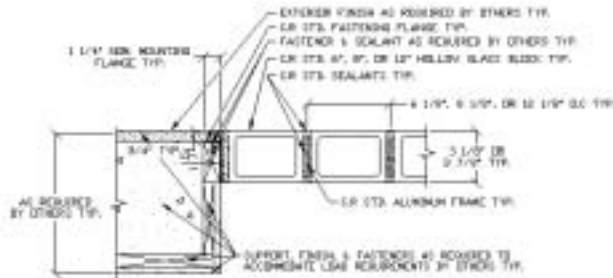
Elite Panels™

Photos Left and Top to Bottom  
 Private Residence, Melbourne, FL Contractor: Johnson & Associates - Standard Elite Panel - Beth Israel Hospital, Boston, MA, Architect: Rothman Heineman - McDonalds Restuarnt, Plainfield, CT, Architect: Paul Dodds Associates - Private Residence, Melbourne, FL

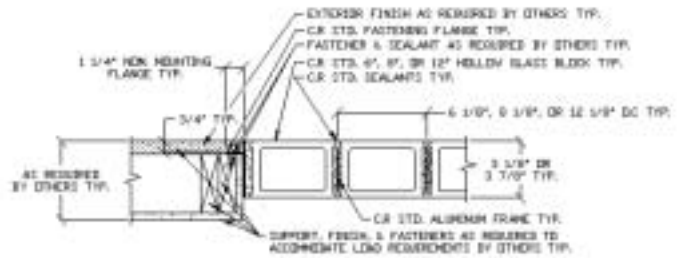
**Products Built To Last!**

# Elite Panels

## Construction Details



ELITE™ MASONRY INSTALLATION TYPICAL DETAIL



ELITE™ WOOD INSTALLATION TYPICAL DETAIL

## Elite™ Glass Block & Internal Metal Panel System

### Installs In Five Easy Steps!

Supplies You Will Need:

- ◆ Hammer or Screw Gun
- ◆ Nails or Screws
- ◆ Level
- ◆ Shims
- ◆ Silicone Sealant

1. Prepare the rough opening according to size listed on the rough opening chart or shop drawing ( according to local building code).
2. Place Elite™ Panel into opening.
3. Shim as required.
4. Fasten into place.
5. Caulk around panel with silicone sealant and caulk over fasteners for watertight seal.



### ELITE PREFABRICATED GLASS BLOCK WINDOW & WALL PANELS (Suggested Rough Opening Dimensions) WOOD CONSTRUCTION

| # of BLOCK | 6" Block | 8" Block | 12" Block |
|------------|----------|----------|-----------|
| 1          | 7-5/8"   | 8-5/8"   | 13-5/8"   |
| 2          | 13-3/4"  | 17-3/4"  | 25-3/4"   |
| 3          | 19-7/8"  | 25-7/8"  | 37-7/8"   |
| 4          | 26"      | 34"      | 50"       |
| 5          | 32-1/8"  | 42-1/8"  | 62-1/8"   |
| 6          | 38-1/4"  | 50-1/4"  | 74-1/4"   |
| 7          | 44-3/8"  | 58-3/8"  | 86-3/8"   |
| 8          | 50-1/2"  | 66-1/2"  | 98-1/2"   |
| 9          | 56-5/8"  | 74-5/8"  | CALL      |
| 10         | 62-3/4"  | 82-3/4"  | CALL      |
| 11         | 68-7/8"  | 90-7/8"  | CALL      |
| 12         | 75"      | 99"      | CALL      |

### (Suggested Rough Opening Dimensions) MASONRY CONSTRUCTION

| # of BLOCK | 6" Block | 8" Block | 12" Block |
|------------|----------|----------|-----------|
| 1          | 8-5/8"   | 10-5/8"  | 14-5/8"   |
| 2          | 14-3/4"  | 18-3/4"  | 26-3/4"   |
| 3          | 20-7/8"  | 26-7/8"  | 38-7/8"   |
| 4          | 27"      | 34"      | 50"       |
| 5          | 33-1/8"  | 43-1/8"  | 62-1/8"   |
| 6          | 39-1/4"  | 51-1/4"  | 74-1/4"   |
| 7          | 45-3/8"  | 59-3/8"  | 86-3/8"   |
| 8          | 51-1/2"  | 67-1/2"  | CALL      |
| 9          | 57-5/8"  | 75-5/8"  | CALL      |
| 10         | 63-3/4"  | 83-3/4"  | CALL      |
| 11         | 69-7/8"  | 91-7/8"  | CALL      |
| 12         | 76"      | 100"     | CALL      |

PLEASE NOTE: THESE DIMENSIONS ALLOW FOR THE USE OF A BRICK STRIP ON MASONRY CONSTRUCTION ( 1X3 FAT WITH SPLAVED END) NOT INCLUDED AS SHOWN ON OUR DETAIL. SECTIONS DIMENSIONS ARE THE ACTUAL ROUGH OPENINGS OF THE MASONRY (NO BLOCKS INSTALLED) OR WOOD FRAME. OPENINGS REQUIRED FOR THIS PRODUCT TO WORK. Dimensions listed above can be (+) but not (-)

### Elite™ Glass Block & Internal Metal Panel System Technical Specifications

Where shown on plans furnish and install Circle Redmont's® Elite™ Panels consisting of a structural two way extruded aluminum (or other appropriate metal) internal grid frame, factory glazed with hermetically sealed, "replaceable type" evacuated glass block, spaced with manufacturers typical on center dimension with proper margins in each monolithic panel.

**Manufacturer shall be Circle Redmont, Inc., 2760 Business Center Blvd., Melbourne, Florida, 32940 Phone 321-259-7374, 800-358-3888.**

Elite™ Panels shall be factory fabricated and glazed of overall sizes as detailed on the drawings. Glass units shall be initially factory installed and insulated in respective cell openings of structural aluminum grids using Circle Redmont's® standard composite thermofil insulating material. Panels shall be weather sealed on their top surfaces with manufacturers standard white grout.

Manufacturer shall have a minimum of 10 years continuous experience in producing and supplying panels as detailed on the drawings. Contracted manufacturer shall bear sole responsibility for all facets of panel fabrication and required personnel for manufacturing units.

The framing system shall provide for expansion and contraction of component materials caused by surface temperature range of -20 degree F to 180 degree F without causing buckling stress on structural elements, failure of joint seals, undue stress on structural elements, reduction of performance or other adverse effects.

Manufacturer shall furnish a one-year warranty covering defective materials, workmanship and weathertight performance of grouted panel units. Installer shall furnish a concurrent written warranty covering defective materials, workmanship and weathertight performance of in field applied joint seals around the perimeter and between adjoining panels.

• [www.circleredmont.com](http://www.circleredmont.com) •



# Skylights

## Outlook® & PSG2000™ Custom Skylighting Systems

**Features.** Outlook® Custom Skylighting System and PSG 2000™ offer versatile skylighting design possibilities. Outlooks® and PSG 2000™ can be completely customized to your project's requirements. PSG2000's™ Patented structural aluminum channel acts as its own foundation independent from the surrounding framework. PSG 2000's™ unique framing system permits natural movement of the supporting structure due to climate change without disturbing the PSG 2000™ frame or stressing glass and assures a leak-proof fit. The PSG2000's™ profile is low (designed to match that of the surrounding roof). Outlook® Custom Skylights come completely fabricated, ready for installation with strong, structural, self-flashing aluminum frames. Our skylight product lines share our other products' commitment to excellence and maintenance benefits.

**Applications.** Outlook® and PSG 2000™ Skylights were developed for commercial and distinctive residential applications where a structural, custom skylighting configuration is desired. Outlook® and PSG 2000™ skylights can be used as skyridges, hipridges, pyramids, greenhouses or custom assemblies.

**Options.** PSG 2000™ and Outlook® skylighting systems are delivered as a complete system and can be designed for virtually any configuration. PSG 2000™ Skylighting System is available prefabricated or can be glazed on site. We offer single or tandem unit assemblies for both systems. Outlook® is available in your choice of standard 1" overall double sealed glazing or custom insulated glass. We also offer custom frame colors and shapes.

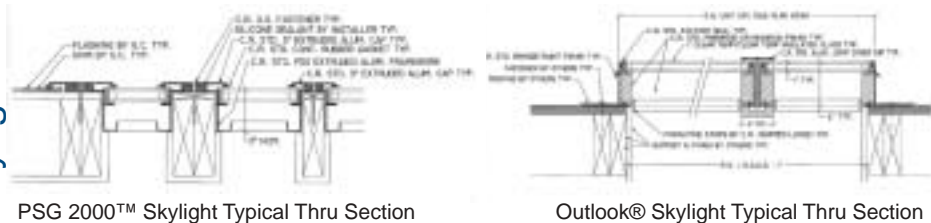
**Common Sizes.** Twenty-five (25) common sizes are readily available for single and tandem assemblies. Please call us at (800) 358-3888 or visit our website at [www.circleredmont.com](http://www.circleredmont.com) for more information.

**Maintenance Benefits.** Whatever size or shape skylighting system you choose, should the glass become damaged due to vandalism or other abuse, the glass can be removed and replaced in a matter of minutes. Replacement glass, sealant and instructions are available! This is a huge benefit and crucial for any product designed to last for a building's lifetime!



Photos Top to Bottom  
Private Residence, Poundridge, NY, Custom Hip Ridge Skylight Over Spa  
Private Residence, Weston, CT - Tandem Assem-

### Construction Details



PSG 2000™ Skylight Typical Thru Section

Outlook® Skylight Typical Thru Section

12 Outlooks® & PSG2000 Skylights™

**Don't spend time and money on Design and Engineering. It's built into Circle Redmont's prices! Call 1-800-358-3888 for assistance.**